

Part Numbers

May 2005

WHITE SMD FAMILY P/N N_Rule

P	G	1	N	-	1	B	W	E
ProLight	Power Package				Watts	Lens	Color	Type
CODE 1	CODE 2 & 3		CODE 4		CODE 5	CODE 6	CODE 7	CODE 8

version 1.0 / 20050505

CODE 1

Code	ProLight
------	----------

CODE 2&3

Code	Power Package Family
G1	Gen I
L6	Leadframe 6 lead
M6	Mini type 6 lead
G2	Gen II

CODE 4

Code	Chip Type
N	Normal Package

CODE 5

Code	Package
1	1w
3	3w
5	5w
S	eSeries (30mil 0.7W)
F	eSeries (24mil 0.5W)

CODE 6

Code	Package
B	Batwing
L	Lambertian

CODE 7

Code	Color
W	White
V	Warm White
D	455 Royal Blue (Dental)
B	470 Blue
C	505 Cyan
G	530 Green
A	590 Amber
H	615 Red Orange
R	625 Red
F	RGB Full Color(common cathode)
U	RGB Full Color(common anode)
4	RGGB 4 in 1
Z	RYGB 4 in 1

CODE8

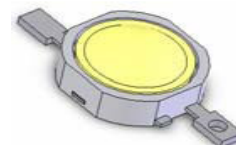
Code	Color
S	Star
E	Emitter
C	Star/O
T	Star/E

Part Numbers

May 2005

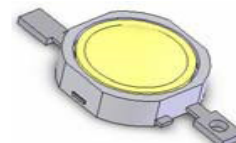
ProLight 1W Part Number

Item	Part Number PG1N-				Color	Radiation Pattern
	Emitter	Star	Star/O	Star/E		
1	1LWE	1LWS	1LWC	1LWT	White	Lambertian
2	1LVE	1LVS	1LVC	1LVT	Warm White	
3	1LGE	1LGS	1LGC	1LGT	Green	
4	1LCE	1LCS	1LCC	1LCT	Cyan	
5	1LBE	1LBS	1LBC	1LBT	Blue	
6	1LDE	1LDS	1LDC	1LDT	Royal Blue	
7	1LRE	1LRS	1LRC	1LRT	Red	
8	1LAE	1LAS	1LAC	1LAT	Amber	
9	1LHE	1LHS	1LHC	1LHT	Red-Orange	
1	1BWE	1BWS	1BWC	1BWT	White	Batwing
2	1BVE	1BVS	1BVC	1BVT	Warm White	
3	1BGE	1BGS	1BGC	1BGT	Green	
4	1BCE	1BCS	1BCC	1BCT	Cyan	
5	1BBE	1BBS	1BBC	1BBT	Blue	
6	1BDE	1BDS	1BDC	1BDT	Royal Blue	
7	1BRE	1BRS	1BRC	1BRT	Red	
8	1BAE	1BAS	1BAC	1BAT	Amber	
9	1BHE	1BHS	1BHC	1BHT	Red-Orange	



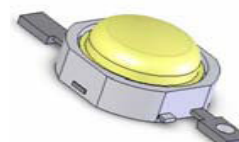
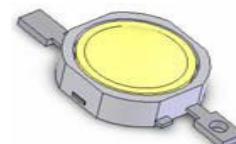
ProLight 3W Part Number

Item	Part Number PG1N-				Color	Radiation Pattern
	Emitter	Star	Star/O	Star/E		
1	3LWE	3LWS	3LWC	3LWT	White	Lambertian
2	3LVE	3LVS	3LVC	3LVT	Warm White	
3	3LGE	3LGS	3LGC	3LGT	Green	
4	3LCE	3LCS	3LCC	3LCT	Cyan	
5	3LBE	3LBS	3LBC	3LBT	Blue	
6	3LDE	3LDS	3LDC	3LDT	Royal Blue	
7	3LRE	3LRS	3LRC	3LRT	Red	
8	3LAE	3LAS	3LAC	3LAT	Amber	
9	3LHE	3LHS	3LHC	3LHT	Red-Orange	
1	3BWE	3BWS	3BWC	3BWT	White	Batwing
2	3BVE	3BVS	3BVC	3BVT	Warm White	
3	3BGE	3BGS	3BGC	3BGT	Green	
4	3BCE	3BCS	3BCC	3BCT	Cyan	
5	3BBE	3BBS	3BBC	3BBT	Blue	
6	3BDE	3BDS	3BDC	3BDT	Royal Blue	
7	3BRE	3BRS	3BRC	3BRT	Red	
8	3BAE	3BAS	3BAC	3BAT	Amber	
9	3BHE	3BHS	3BHC	3BHT	Red-Orange	



ProLight V Part Number List Matrix

Item	Part Number PG1N-				Color	Radiation Pattern
	Emitter	Star	Star/O	Star/E		
1	5LWE	5LWS	5LWC	5LWT	White	Lambertian
2	5LVE	5LVS	5LVC	5LVT	Warm White	
3	5LGE	5LGS	5LGC	5LGT	Green	
4	5LCE	5LCS	5LCC	5LCT	Cyan	
5	5LBE	5LBS	5LBC	5LBT	Blue	
6	5LDE	5LDS	5LDC	5LDT	Royal Blue	
7	5LRE	5LRS	5LRC	5LRT	Red	
8	5LAE	5LAS	5LAC	5LAT	Amber	
9	5LHE	5LHS	5LHC	5LHT	Red-Orange	
1	5BWE	5BWS	5BWC	5BWT	White	Batwing
2	5BVE	5BVS	5BVC	5BVT	Warm White	
3	5BGE	5BGS	5BGC	5BGT	Green	
4	5BCE	5BCS	5BCC	5BCT	Cyan	
5	5BBE	5BBS	5BBC	5BBT	Blue	
6	5BDE	5BDS	5BDC	5BDT	Royal Blue	
7	5BRE	5BRS	5BRC	5BRT	Red	
8	5BAE	5BAS	5BAC	5BAT	Amber	
9	5BHE	5BHS	5BHC	5BHT	Red-Orange	

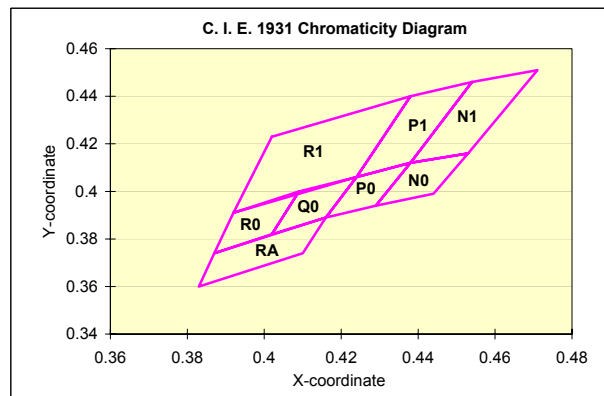
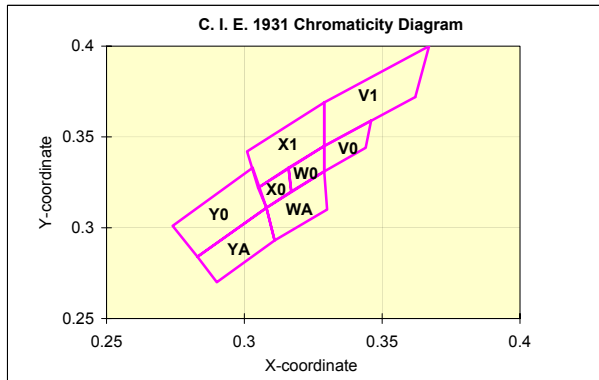


Photometric Luminous Flux Bin Structure

Bin Code	Minimum Photometric Flux (lm)	Maximum Photometric Flux (lm)
F	2.9	3.8
G	3.8	4.9
H	4.9	5.3
L	5.3	8.2
K	8.2	10.7
L	10.7	13.9
M	13.9	18.1
N	18.1	23.5
P	23.5	30.6
Q	30.6	39.8
R	39.8	51.7
S	51.7	67.2
T	67.2	87.4
U	87.4	113.6
V	113.6	147.7
W	147.7	192.0
X	192.0	249.6

Forward Voltage Bins

Bin Code	Minimum Forward Voltage (V)	Maximum Forward Voltage (V)
C	1.83	2.07
D	2.07	2.31
E	2.31	2.55
F	2.55	2.79
G	2.79	3.03
H	3.03	3.27
J	3.27	3.51
K	3.51	3.75
L	3.75	3.99
M	3.99	4.23
N	4.23	4.47
R	5.43	5.91
S	5.91	6.39
T	6.39	6.87
U	6.87	7.35
V	7.35	7.83
W	7.83	8.31



Color Bins for Blue

Bin Code	Minimum Dominant Wavelength (nm)	Maximum Dominant Wavelength (nm)
1	460	465
2	465	470
3	470	475
4	475	480
5	480	485
6	485	490

Color Bins for Green

Bin Code	Minimum Dominant Wavelength (nm)	Maximum Dominant Wavelength (nm)
1	520	525
2	525	530
3	530	535
4	535	540
5	540	545
6	545	550

Color Bins for Amber

Bin Code	Minimum Dominant Wavelength (nm)	Maximum Dominant Wavelength (nm)
1	584.5	587
2	587	589.5
4	589.5	592
6	592	594.5
7	594.5	597

Color Bins for Red / Red-Orange

Bin Code	Minimum Dominant Wavelength (nm)	Maximum Dominant Wavelength (nm)
1	610	613.5
2	613.5	620.5
4	620.5	631
5	631	645

Color Bins for White

Bin Code	X	Y	Typ. CCT (K)	Bin Code	X	Y	Typ. CCT (K)
V0	0.346	0.359	5350	X0	0.316	0.333	6700
	0.344	0.344					
	0.329	0.331					
	0.329	0.345					
	0.346	0.359					
V1	0.367	0.4	5500	X1	0.329	0.369	6300
	0.362	0.372					
	0.329	0.345					
	0.329	0.369					
	0.367	0.4					
W0	0.329	0.345	6050	YA	0.308	0.311	8000
	0.329	0.331					
	0.317	0.32					
	0.316	0.333					
	0.329	0.345					
WA	0.329	0.331	6300	Y0	0.303	0.333	8000
	0.33	0.31					
	0.311	0.293					
	0.308	0.311					
	0.329	0.331					

Color Bins for Warm White

Bin Code	X	Y	Typ. CCT (K)	Bin Code	X	Y	Typ. CCT (K)
N0	0.438	0.412	2950	Q0	0.409	0.4	3370
	0.429	0.394					
	0.444	0.399					
	0.453	0.416					
	0.438	0.412					
N1	0.454	0.446	2950	R0	0.392	0.391	3640
	0.438	0.412					
	0.453	0.416					
	0.471	0.451					
	0.454	0.446					
P0	0.424	0.406	3150	R1	0.402	0.423	3500
	0.416	0.389					
	0.429	0.394					
	0.438	0.412					
	0.424	0.406					
P1	0.438	0.44	3150	RA	0.387	0.374	3500
	0.424	0.406					
	0.438	0.412					
	0.454	0.446					
	0.438	0.44					